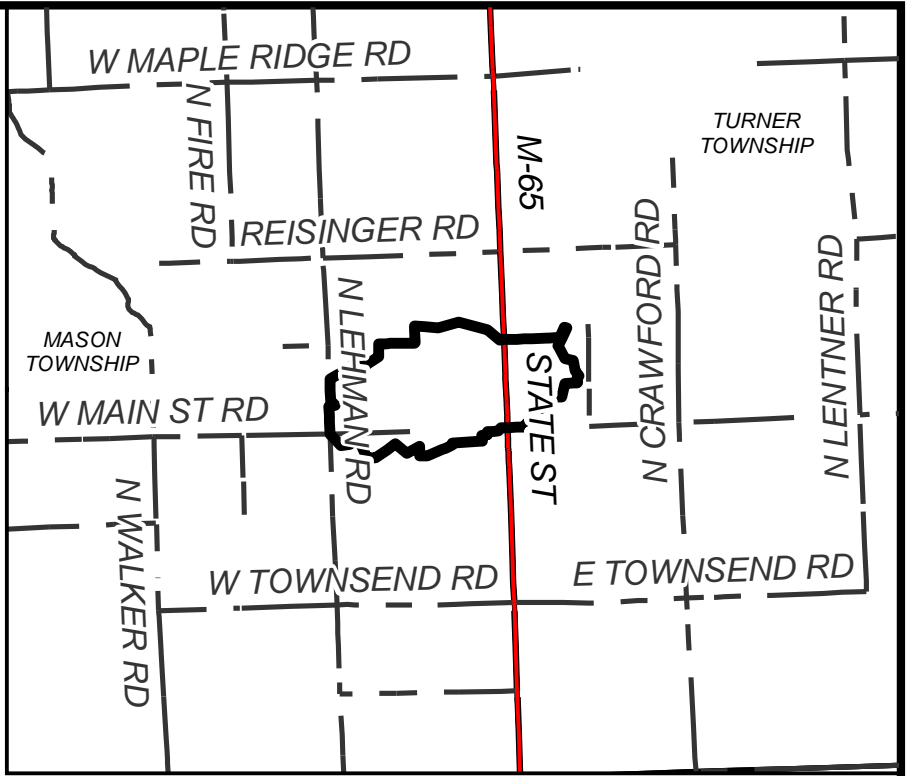
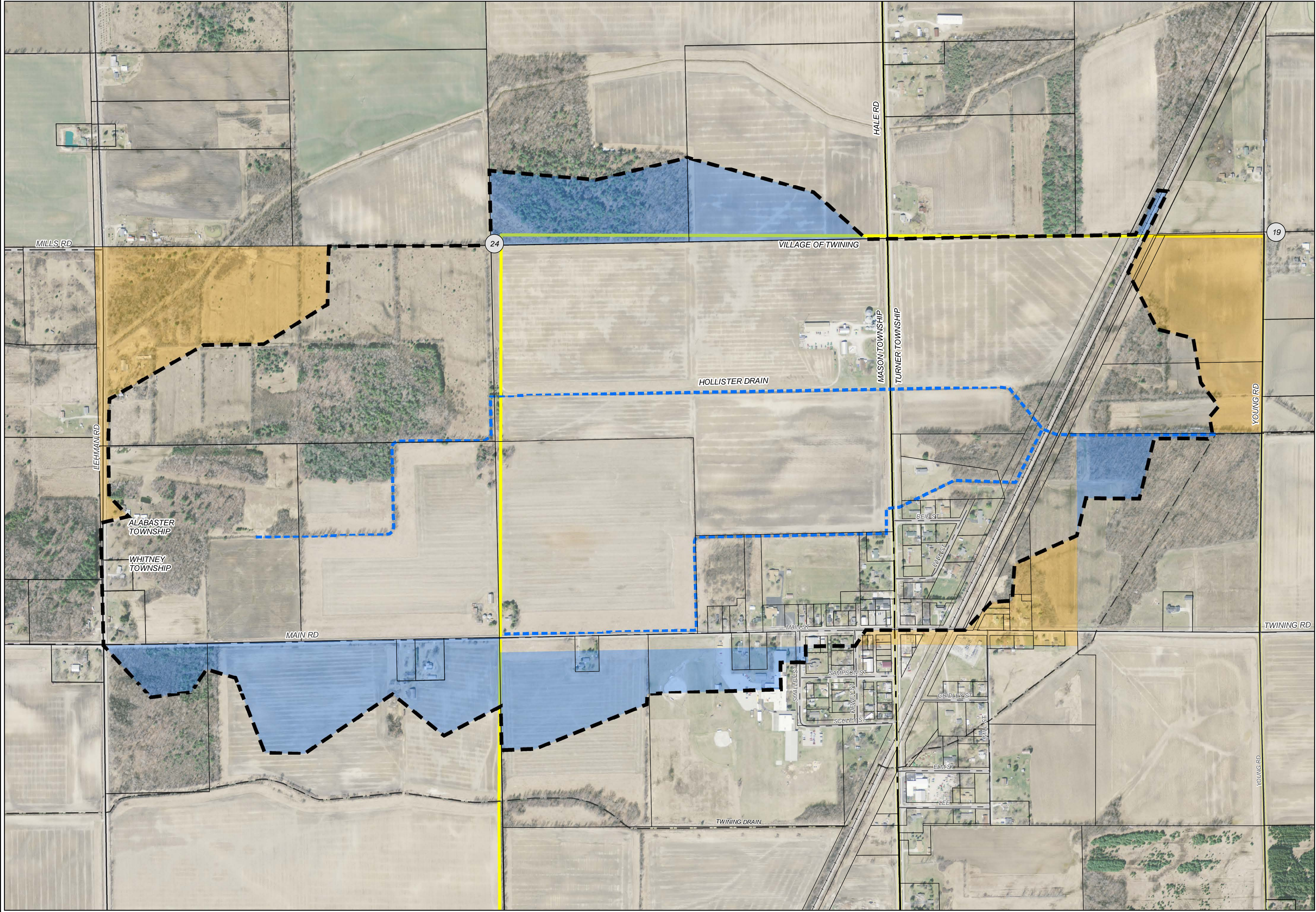


HOLLISTER DRAIN

ARENAC COUNTY DRAIN COMMISSIONER - JEFF TROMBLEY



AREA MAP
NOT TO SCALE


N



0 150 300 600 FEET

LEGEND

- APPROXIMATE DRAIN LOCATION
- APPROXIMATE LOCATION OF OUTLET WATERCOURSE
- DRAINAGE DISTRICT BOUNDARY
- LANDS ADDED TO DISTRICT
- LANDS REMOVED FROM DISTRICT
- STATE ROADS
- COUNTY ROADS
- LOCAL ROADS
- RAILROAD
- MUNICIPALITY BOUNDARY
- PARCEL BOUNDARY
- SECTION

BY	MARK	REVISIONS	DATE
THE WORK REPRESENTED BY THIS DRAWING WAS DESIGNED BY THE ENGINEER FOR THIS SPECIFIC APPLICATION AND SPECIFIC LOCATION DESCRIBED HEREIN IN ACCORDANCE WITH THE CONDITIONS PREVALENT AT THE TIME THE DESIGN WAS DONE. THE ENGINEER DOES NOT GUARANTEE AND WILL NOT BE LIABLE FOR ANY OTHER LOCATION, CONDITION, DESIGN OR PURPOSE.			
HOLLISTER DRAIN ARENAC COUNTY, MICHIGAN			
DRAINAGE DISTRICT MAP			
 SAGINAW'S OFFICE 230 S Washington Ave Saginaw, MI 48607 Tel. 989-754-4747 www.SpicerGroup.com			
DE. BY: WTM DR. BY: JMK	CH. BY: RBH APP. BY: RBH	PROJECT NO. 127127SG2019	
STDS.	SHEET 1 OF 1	DR 1	
DATE: JULY 2020 SCALE: 1" = 300'	FILE NO.		